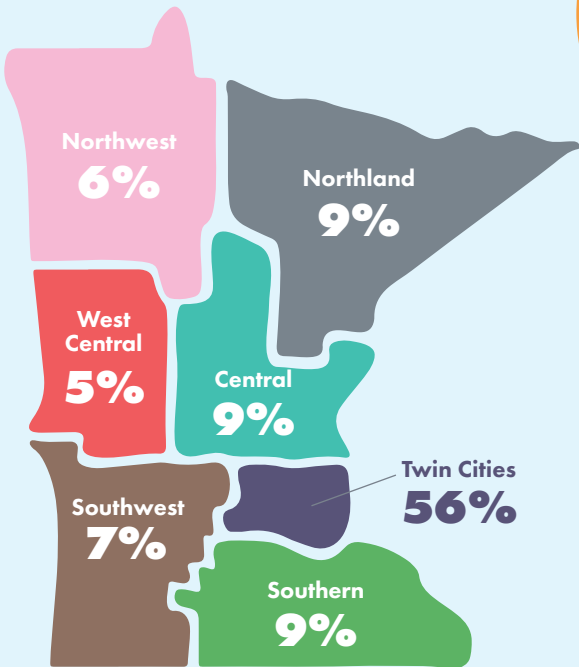


# Minnesota Disaster Recovery Fund for Coronavirus

In March 2020, the Minnesota Council on Foundations (MCF) and Saint Paul & Minnesota Foundation created the Minnesota Disaster Recovery Fund (MDRF) to support community needs as a result of the coronavirus pandemic. MDRF allocated grants through local community foundations, the Minnesota Initiative Foundations, and other intermediaries who possessed the knowledge to address specific needs in their communities.

## STATEWIDE FUNDING DISTRIBUTION (BY REGION)



According to Minnesota Compass, the percentage of population per region are: Central - 758,101 (14%); Northland - 324,818 (6%); Northwest - 170,798 (3%); Southern - 739,132 (13%); Southwest - 275,843 (5%); Twin Cities - 3,065,147 (55%); and West Central 229,539 (4%).

99

Grants Awarded To Intermediaries

77  
Donors

Total Funding Fundraised and Dispersed by MDRF

\$11,618,980

100% of fund contributions were distributed to community intermediaries for disaster recovery efforts in the state of Minnesota.

92  
Intermediaries

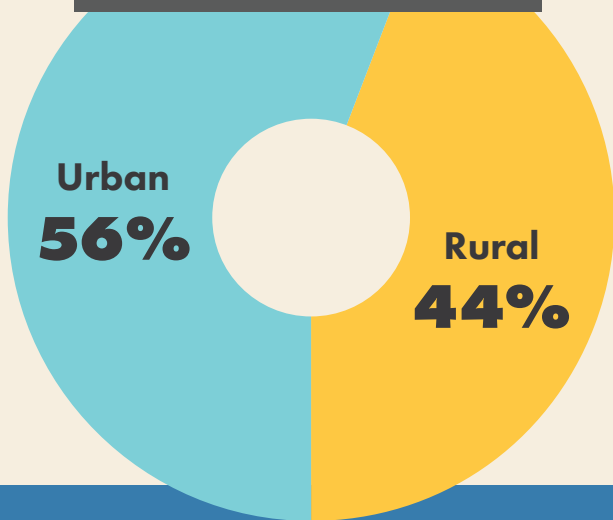
Average Grant Size  
\$117,363.43

## Intermediaries Regranted To:

1,700+ Nonprofit Organizations      3,000+ Small Businesses

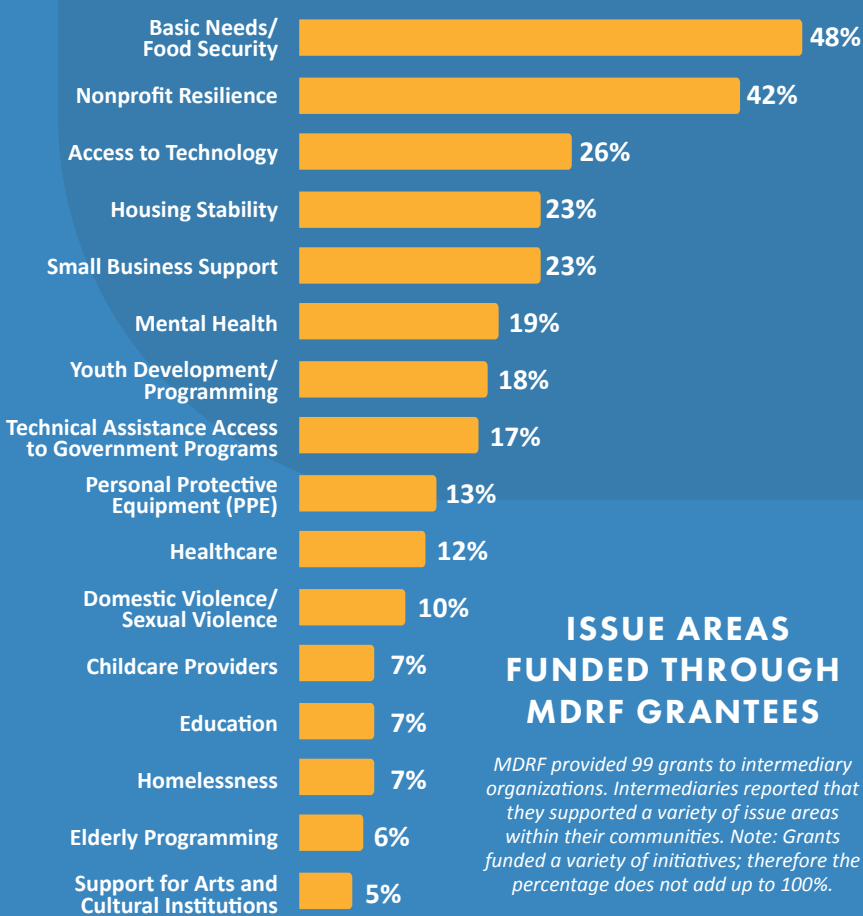
Note: Donors include institutional foundations and donor-advised funds. There were an additional 123 individuals who donated to MDRF.

## FUNDING DISBURSEMENT: URBAN VS. RURAL



Funding supported Minnesota's diverse communities (including but not limited to): Asian, Black, Disability Community, Hmong, Indigenous, Immigrant, Islamic, Jewish, Karen, Latino/Latina/Latinx, Lao, LGBTQIA, Native American, People of Color, Sudanese and Undocumented Immigrants.

Note: Roughly 50 percent of grantees mentioned serving Black, Indigenous, and people of color (BIPOC) either in the description of their project and/or in their report; many acknowledged that they worked with one or more races, diverse communities, etc.



## ISSUE AREAS FUNDED THROUGH MDRF GRANTEES

MDRF provided 99 grants to intermediary organizations. Intermediaries reported that they supported a variety of issue areas within their communities. Note: Grants funded a variety of initiatives; therefore the percentage does not add up to 100%.

## KEY TAKEAWAYS

### Overall for MDRF

- Gather as much information about the situation, but be flexible and adaptable to changes and emerging needs.
- Establish transparent communication and approaches, particularly around equity, racial equity and equality.
- Determine how to measure impact, which could influence how data is captured (i.e. questions in applications and reporting).
- Include administrative fees in fundraising to support the organizations leading the collaborative, and allow intermediaries the option to include administrative costs in their proposal.

Minnesota  
Disaster  
Recovery  
Fund  
for coronavirus